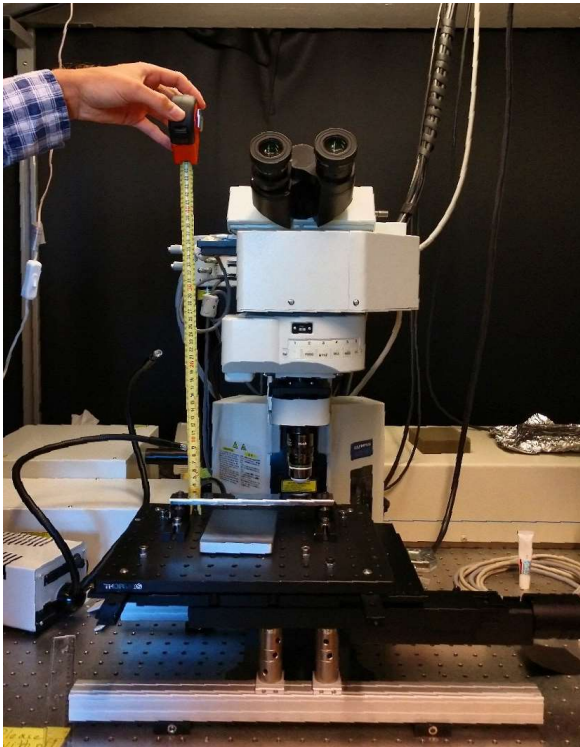
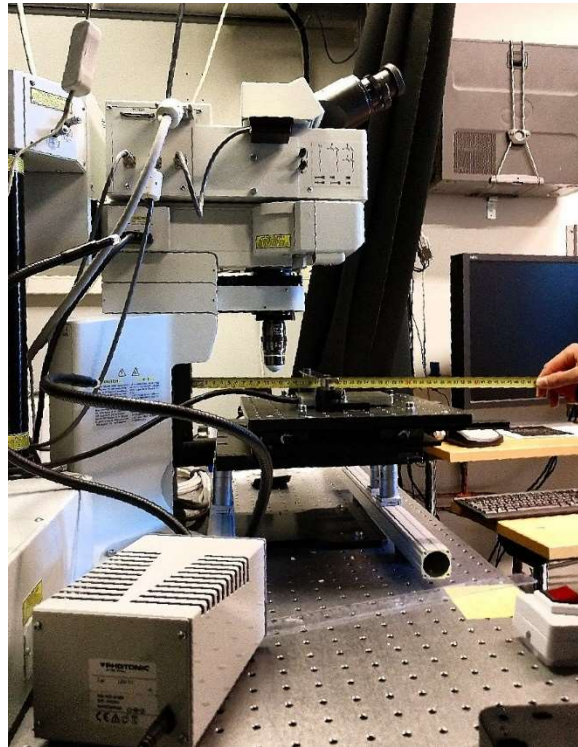


## 2p microscope picture-taking for compatibility: we need two images, front and side view (ideally with a ruler)

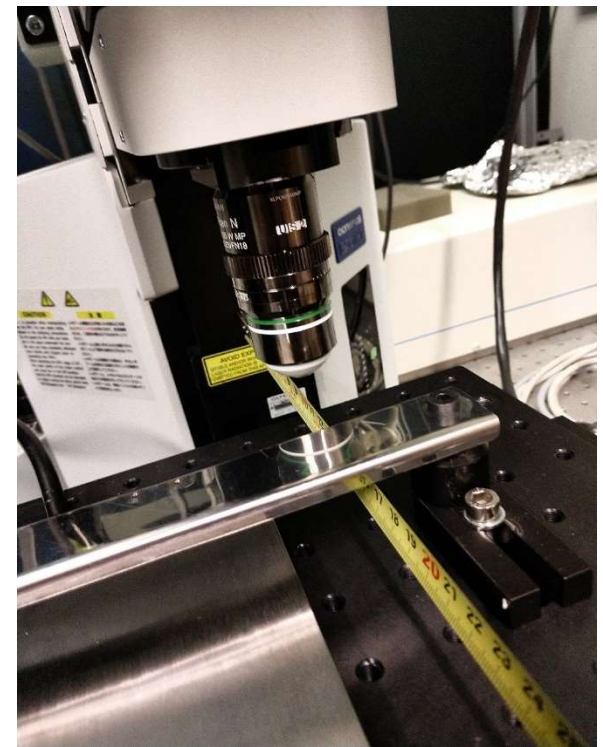
1. Front view with a ruler    2. Side view with a ruler    How to position the ruler



For assessing distance  
from the stage to the  
objective's tip



For assessing distance  
from the microscope's frame  
to the objective's tip



Note: for all measurements,  
align the ruler with the optical  
axis of the objective's lens