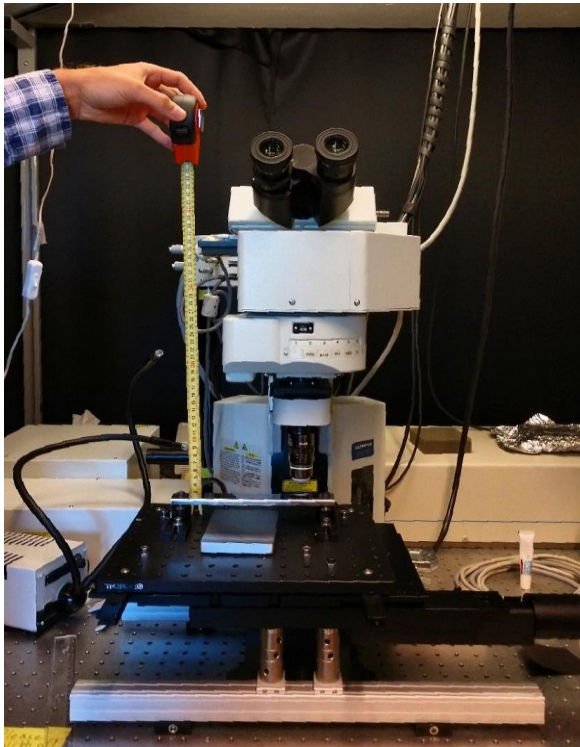
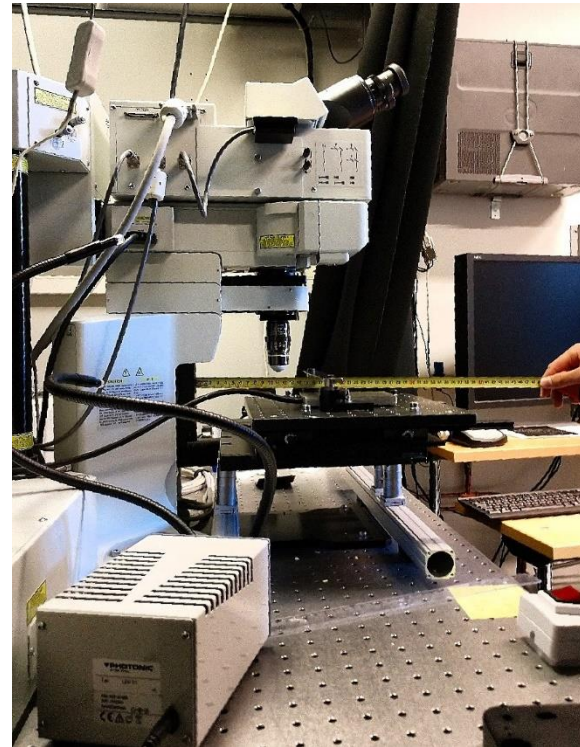


2p microscope picture-taking for compatibility: we need two images, front and side view (ideally with a ruler)

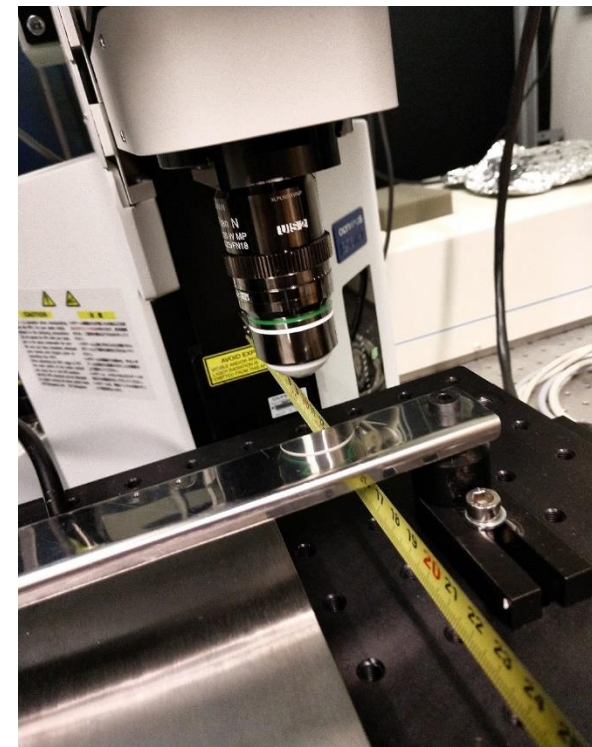
1. Front view with a ruler
 2. Side view with a ruler
- How to position the ruler



For assessing distance
from the stage to the
objective's tip



For assessing distance
from the microscope's frame
to the objective's tip



Note: align the ruler with the
axis of the objective lens